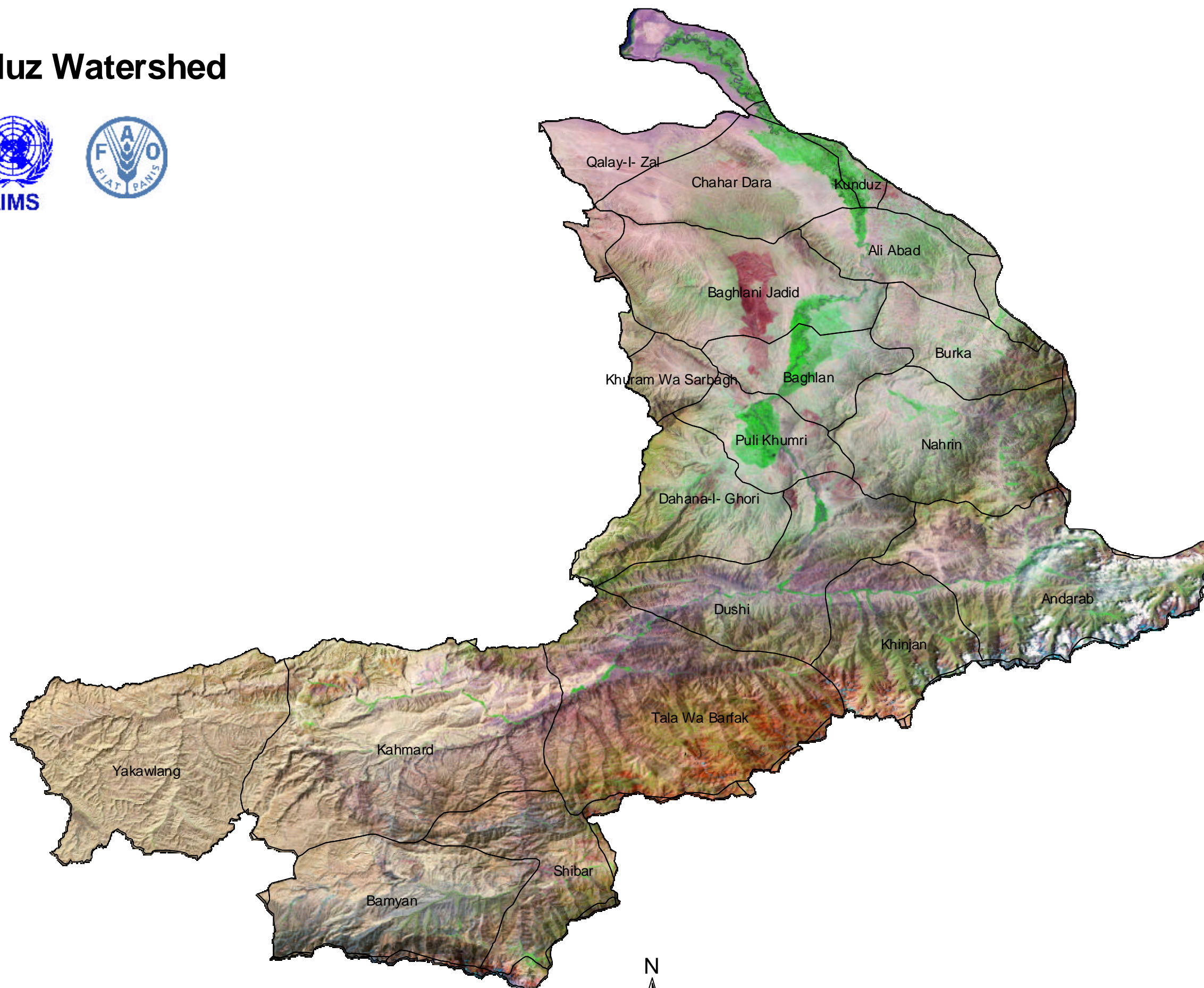


# Kunduz Watershed



Note:  
The boundaries and names on the maps  
do not imply official endorsement or acceptance  
by the United Nations.

For Further Information Contact AIMS  
Email: [info@aims.org.af](mailto:info@aims.org.af)  
[www.aims.org.af](http://www.aims.org.af)

Source:  
Landsat-5 TM scenes acquired within one or  
two years of 1990. The color image is  
comprised of three spectral bands, TM 7, 4,  
and 2 composited as R, G, and B respectively.